

# TOWN OF WALPOLE

## COMPLETE STREETS DEMONSTRATION PROJECT

### OVERVIEW

The Town of Walpole, in partnership with Southwest Region Planning Commission and Healthy Monadnock, is planning a temporary pop-up Complete Streets demonstration in Walpole Village to showcase ways the street can be made safer for pedestrians, bicyclists, and motorists. The pop-up demonstration will take place over Old Home Day weekend and will involve making temporary changes to the streetscape using materials such as removable traffic tape, chalk paint, traffic cones, and signs that can be easily removed. The goal of the event is to engage residents in future planning efforts and initiate conversations about how to make Walpole's streets safer and more pedestrian and bicycle friendly.

### WHAT IS COMPLETE STREETS?

Complete Streets is an approach to transportation planning and design that strives to balance the needs of all users, including people of all ages, abilities, and modes of travel. Simply put, Complete Streets make it easy to cross the street, walk to school, and bicycle to work.

### DEMONSTRATION GOALS

The goals of this temporary installation include the following:

1. Get conversations started in town about how to make Walpole's transportation network safer for everyone;
2. Gather feedback from the public about what safety concerns they have and where safety improvements should be prioritized;
3. Introduce the concept of "Complete Streets" to the wider public;
4. Try out potential changes to the streetscape to see how well they work;
5. Raise awareness and knowledge of Walpole's recently adopted Complete Streets policy; and
6. Engage residents in a new and fun way.

### DEMONSTRATION DESIGN

Please see the next page for the demonstration design.

---

### FOR MORE INFORMATION, PLEASE CONTACT:

Mari Brunner • Southwest Region Planning Commission • [mbrunner@swrpc.org](mailto:mbrunner@swrpc.org) • (603) 357-0557

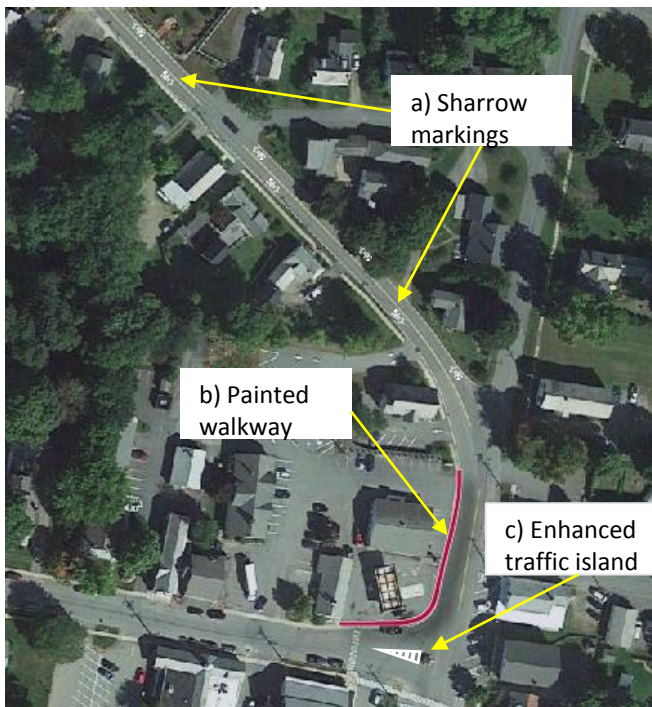
---

# COMPLETE STREETS DEMONSTRATION DESIGN

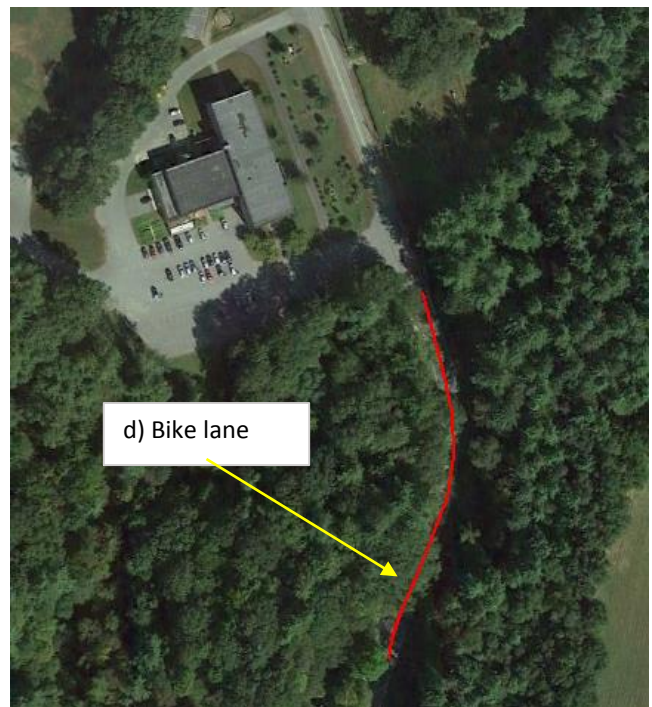
The Walpole Complete Streets demonstration will include three temporary changes to the streetscape in Walpole Village and one change to the streetscape near the school on Main Street. No parking will be removed for this event.

- a) Sharrow markings on Main Street between Elm Street and Old North Main Street to increase driver awareness of bicyclists and direct bicyclists to ride in the safest spot within the travel lane
- b) Painted walkway on the Northwest corner of the Main Street/Westminster Street intersection to improve visibility of the walkway for pedestrians and motorists
- c) Enhanced traffic island to help slow motorists moving through the Main Street/Westminster Street intersection and clarify where drivers should go
- d) A bike lane on one side of the street south of the school for ~500 feet, with one bicycle lane symbol every 100 feet

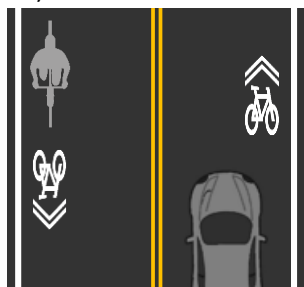
## WALPOLE VILLAGE



## WALPOLE SCHOOL on MAIN STREET



a) Plan view of sharrow::



d) Plan view of bicycle lane:

